

Products

Microinverter

Single unit

2 in 1

4 in 1

Accessories

AC Module

DTU

Storage

MLPE PV Kit

Download



“The World’s First Single-Phase Microinverter” designed for 4 solar panels with dual MPPTs, with wide DC input operating voltage start-up voltage (22V only).

Hoymiles 4 in 1 microinverter MI-1000/MI-1200 is “The Best Power Density Microinverter” ever in solar industry with extremely light including integrated DC & AC cables; 3-phase wiring makes it easy to be configured by Hoymiles 4 in 1 microinverter for MW size PV power stations (one the world’s biggest microinverter projects configured by Hoymiles microinverter is 3.6MW).

Safer

Up to 60V DC input voltage (natural rapid shutdown) to guarantee no electric shock & fire risk on rooftop<>

Stronger

Module-level MPPT to ensure 10-30% more energy harvest compared with string inverter

Smarter

Module-level monitoring for remote troubleshooting & maintenance management

Smaller, Lighter & Easier

Smaller than A4 paper size, 1.98kG only with AC cable (1 m) integrated, one person’s easy installation

More stable & reliable

6000V surge protection, MTBF (mean time between failure) > 550years, yearly failure rate < 0.18%

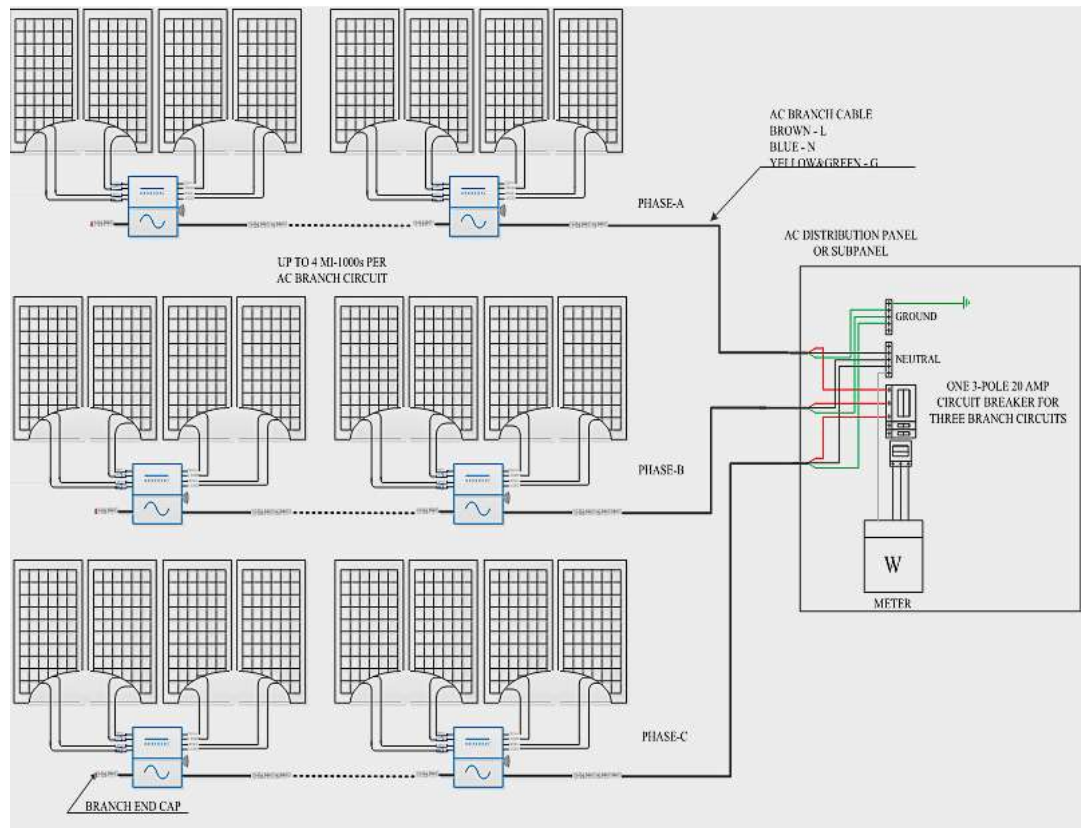
Better Payback (IRR)

Module-level solution, extremely low failure, longer generation(start-up voltage 22V only), low LCOE (Levelized Cost of Electric (20+ year) of investment

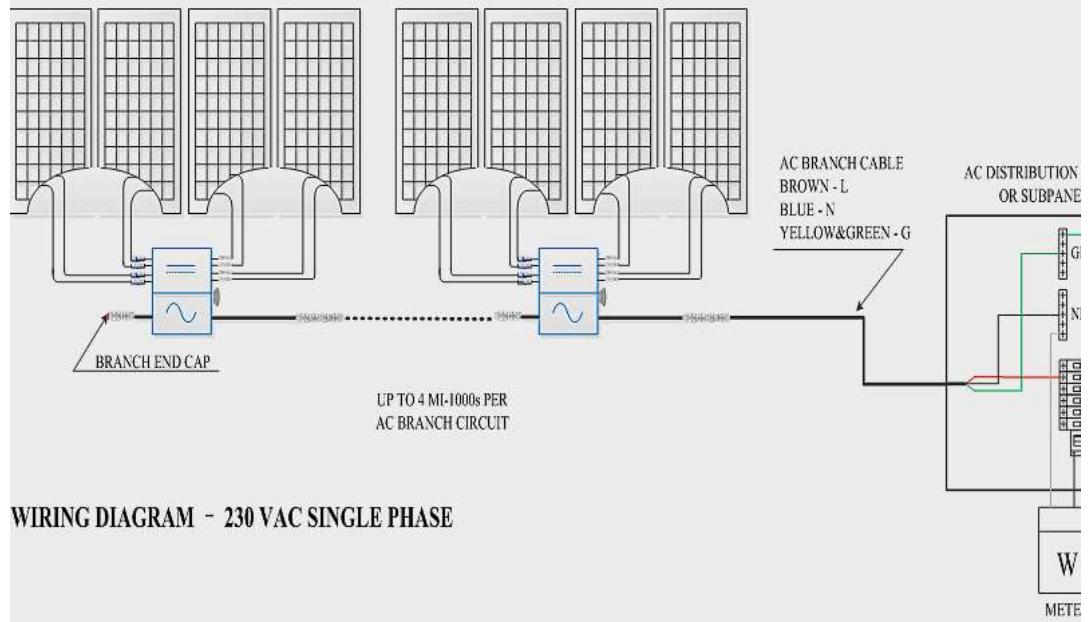
Data of 4 in 1 microinverter for 60V

Model	MI-1000 / MI-1200 (4X60 cells / 4X72 cells)		
Input Data(DC)			
Recommended input power (W)	Up to 1240 / 1520		
Peak power MPPT voltage range (V)	27 - 48 / 32 - 48		
Start-up voltage(V)	22		
Operating voltage range (V)	16 - 60		
Maximum input voltage (V)	60		
Maximum input current (A)	10.5		
Output Data (AC)	@208V AC	@240V AC	@230V AC
Rated output power (W)	1000 / 1200	1000 / 1200	1000
Rated output current (A)	4.81 / 5.76	4.16 / 5	4.35
Nominal output voltage/range (V)	208/183-250	240 / 211-264	230/1
Nominal frequency/range (Hz)	60/59.3-60.5	60 / 59.3-60.5	50/
Power factor	> 0.99	> 0.99	>
Output current harmonic distortion	< 3%	< 3%	<
Maximum units per 20A branch	3 / 3	4 / 3	4
Efficiency			
CEC peak efficiency	96.50%		
CEC weighted efficiency	96.00%		
Nominal MPPT efficiency	99.80%		
Night time power consumption (mW)	<50		
Mechanical Data			
Ambient temperature range (°C)	-40 - +65		
Operating temperature range (°C)	-40 - +85		
Dimensions (W×H×D mm)	280×176×33		
Weight (KG)	3.75 (including 1.9m AC cable)		
Enclosure rating	NEMA6 (IP67)		
Cooling	Natural convection - No fans		
Loading Quantity			
Container	1X20' GP		1X40' GP / 1
Pallet No.	10		22
Carton No.	360		756
Total Quantity	1800		3780
Other Features			
Communication	Wireless		
Design lifetime	> 25 years		
Standard Compliance			
EMC	EN61000-6-3:2007+A1:2011 EN61000-6-2:2005 EN61000-3-2:2014 EN61000-3-3:2013		
Safety	EN62109-1:2010 EN62109-2:2011 IEC 62109-1 Ed 1.0 IEC 62109-2 Ed 1.0 UL Std No.1741 - Second Edition EN 60529		
On-Grid	AS/NZS 4777.2:2015 VDE-AR-N4105:2011-08 DIN V VDE V 0126-1-1/A1:2 IEC61727:2004 EN50438:2013 ANSI/IEEE 1547.1 IEC62116:2011 UTE C 15- NB T32004-2013		

Wiring diagrams for 4 in 1 microinverter



WIRING DIAGRAM - 230 VAC / 400 VAC THREE PHASE



WIRING DIAGRAM - 230 VAC SINGLE PHASE

Warranty